

# NoWave Slalom Cup 2016

The NoWave – Niederösterreichischer Wasserschiverein – is proud to announce the **NoWave Slalom Cup 2016** on **July the 9<sup>th</sup> & 10<sup>th</sup>** in commission and with permit of the Austrian Waterski & Wakeboard Federation on our nature site in Neuaigen / Tulln. – just about 30 minutes away from downtown Vienna and near Tulln.

Member and 2<sup>nd</sup> Stop of:

**Slalom Tournament Tour 2016!**

## Slalom Ratings:

Best of 4 Rounds

## Program:

Friday, July **8th**            10.00 – 18.00 Training ( 4 Pass €20,- / 6 Pass €60,-)  
   18.00 Homologation

Saturday, July **9th**: 09.00 Round 1 & Round 2

Sunday, July **10th**: 09.00 Round 3 & Round 4

Prize giving will be held as soon as possible after the end of the competition.

## Age Divisions:

U14, U17, U21, Open, 35+, 45+, 55+, 65+

*To be rated 3 contestants per division are required!*

*Medals, 3 deep for each division.*

## Results:

[www.iwwfed-ea.org](http://www.iwwfed-ea.org)

## Homologation:

The NoWave Slalom Cup 2016 will be Standings List homologated according to the rules of the IWWF.

## Lake:



### **Training:**

Due to the rather short length of the lake an 8-buoys Slalom course is installed. We recommend using the training opportunities unless you are experienced with this type of course.

### **Boat:**

Malibu Response TXI 2016

### **Entries:**

- entry fee on site: € 140,-
- up to 7 days in advance the entry fee is € 120,- if transferred to our bank account:

NoWave – Niederösterreichischer Wasserskiverein

IBAN: AT11 3258 5000 0442 8405

Please refer to: "Cup 16" and mention your NAME!

Please send your entry-forms prior to July 3rd

Bernd e-mail: [bernd.jirak@aon.at](mailto:bernd.jirak@aon.at)

### **Accommodations:**

If you don't want to go Downtown Vienna there is Tulln close to our lake (5 min by car) with many Hotels and Bed&Breakfast sites.

Römerhof

Langenlebarner Str.66

3430 Tulln

02272/62954

[www.hotel-roemerhof.at](http://www.hotel-roemerhof.at)

### **Organizing Committee:**

Bernd: mobile: +43 676 833 40 812

e-mail: [bernd.jirak@aon.at](mailto:bernd.jirak@aon.at)

Bookings for the officials are made by the organizer, their costs will be paid.

All judges are kindly requested to send their requirements to Bernd.

### **Indemnity:**

Standards for condition and safety measures of tournament site are suited to the respectively valid rules of the International Waterski Federation (IWWF), the National Waterski Federation (ÖWWV), the respectively valid rules and way of holding of the ÖWWV and the respectively valid agreement (rule book) between the organizing committee (OK) and the ÖWWV. Orders of the respective judge are so far definitives. Each participant commits himself to tell own faultings the judge. Starting in the tournament means that the competitor will recognize the suitability and sufficiency of the given tournament site condition and the available safety measures. The promoter will accept no moreover responsibility for a certain tournament site condition or special safety measures.



## How to find:

### von Wien Nord

A22 Donauuferautobahn bis Knoten Stockerau

S5 Stockerauer-Schnellstraße bis Ausfahrt Tulln

Kreisverkehr gerade, alte Straße bis zur Stoptafel (ca. 1km, mehrere Kurven) bei Stoptafel links

nach 300m rechts Einfahrt in die Au

### von Wien West

A1 Westautobahn bis Ausfahrt Altengbach (ca. 40km)

B19 Tullner Bundesstraße rechts Rtg. Tulln (ca. 22km)

vor Tulln (McDonalds) Kreisverkehr links auf B19A-neue Donaubrücke

nach der Eisenbahnbrücke links Rtg. Neuaigen (alte Straße)

nach 1000m links Einfahrt in die Au

### von Krems

S5 Stockerauer-Schnellstraße bis Ausfahrt Tulln

B19 rechts, nach 50m Kreisverkehr links alte Straße bis zur Stoptafel (ca. 1km, mehrere Kurven)

bei Stoptafel links

nach 300m rechts Einfahrt in die Au

### von Linz

A1 Westautobahn bis Ausfahrt St. Christophen (ca. 45km vor Wien)

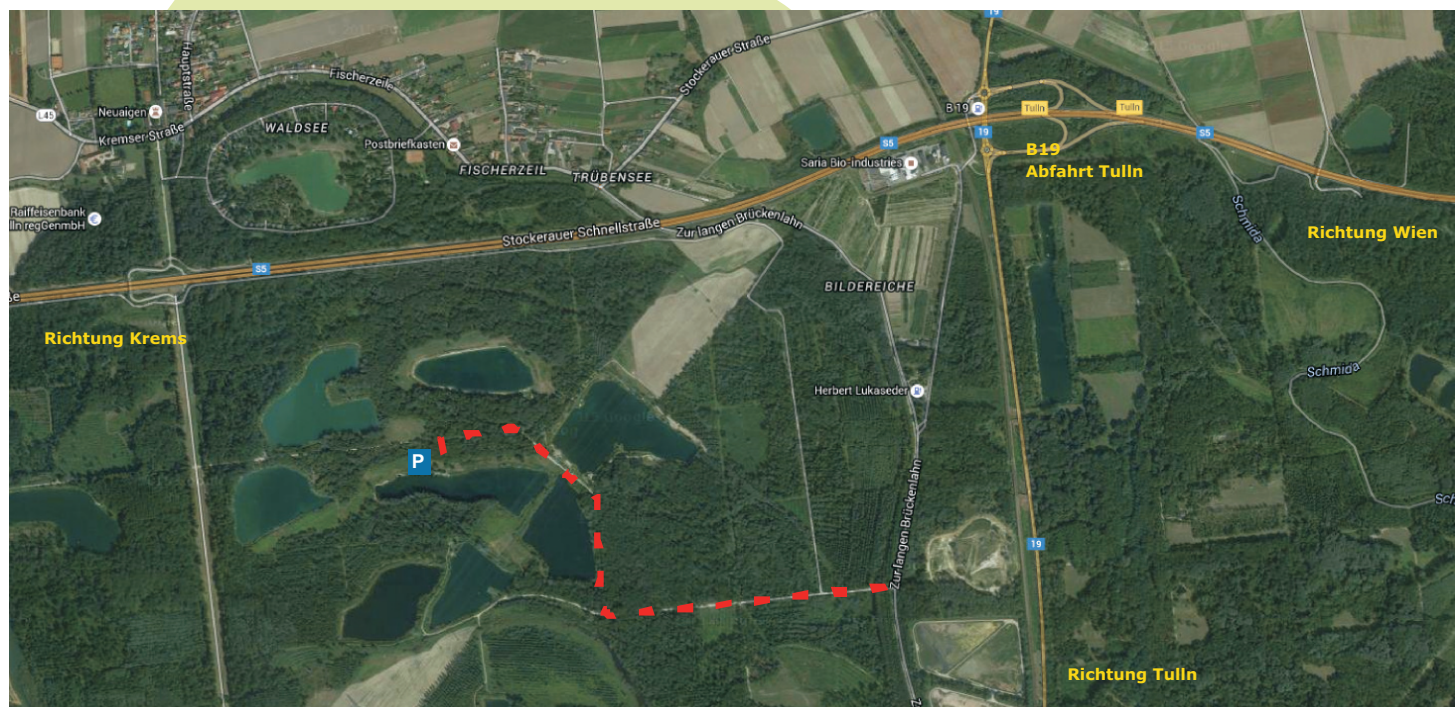
B19 Tullner Bundesstraße links Rtg. Tulln (ca. 20km)

vor Tulln (McDonalds) Kreisverkehr links auf B19A-neue Donaubrücke

nach der Eisenbahnbrücke links Rtg. Neuaigen (alte Straße)

nach 1000m links Einfahrt in die Au

ZUFAHRT INNERHALB DER AU (ca. 1,5km) IST BESCHILDERT :



July 9/10 2016

Country/Club:[illegible]

Prior to the competition every skier has to sign the following indemnity:

Standards for condition and safety measures of tournament site are suited to the respectively valid rules of the International Waterski Federation (IWFF), the National Waterski Federation (ÖWWV), the respectively valid rules and way of holding of the ÖWWV and the respectively valid agreement (rulebook) between the organizing committee (OK) and the ÖWWV. Orders of the respective judge are so far definitives. Each participant commits himself to tell own faultings the judge. Starting in the tournament means that the competitor will recognize the suitability and sufficiency of the given tournament site condition and the available safety measures. The promoter will accept no moreover responsibility for a certain tournament site condition or special safety measures.

As a competitor in the NoWave Slalom Cup 2016 I agree:

- to comply with all instructions given by the IWWF/E&A officials and the organiser;
- that I take part in or am involved in the competition at my own risk;
- that neither the IWWF/E&A nor the organiser nor their officers, servants or agents are responsible for the loss of or damage to personal property, sports clothing or equipment howsoever such loss or damage arises; and
- that neither the IWWF/E&A nor the organizer nor their officers, servants or agents are responsible or liable for any injury or death caused to or suffered by me in any accident, fatal or otherwise, howsoever caused and whether occurring during or in connection with the competition